

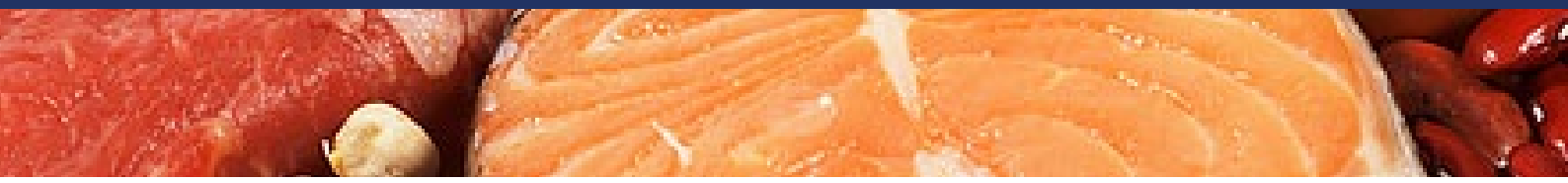
# SEI-CONTRERAS

INGENIERIA



## REFERENCES

Proteins



## Proteins

### Argentina

#### **ONE EFFECT FALLING FILM EVAPORATOR FOR BLOOD PLASMA**

Capacity: 2000 kg of evaporated water/hr

Customer: Industria Química Alimentaria S.A.

Location: Luis Guillón - Buenos Aires

#### **TWO EFFECT FALLING FILM EVAPORATOR WITH INDEPENDENT FINISHER EVAPORATOR FOR MEAT BROTH (82%)**

Capacity: 3.000 kg of evaporated water/hr

Customer: Frigorífico Vizental y Cía.S.A.

Location: San Jose - Entre Rios

#### **TWO EFFECT FALLING FILM EVAPORATOR FOR PROTEINS SOLUTIONS**

Capacity: 1.500 Kg of evaporated water/hr

Customer: Sintex S.A.

Location: Monte Grande - Buenos Aires

#### **SPRAY DRYER FOR WHOLE EGG, EGG WHITE AND YOLK**

Capacity: 8.000 eggs/hr

Customer: Avícola De Col (AXOVO SRL)

Location: Zárate - Buenos Aires

#### **MULTIPLE EFFECT FALLING FILM EVAPORATOR WITH INDEPENDENT FINISHER EVAPORATOR FOR MEAT BROTH (82%)**

Capacity: 3.000 of feed /hr

Customer: S.A. Frigorífico Monte Grande Ltda.

Location: Monte Grande - Buenos Aires

#### **MEAT PROCESSING PILOT PLANT**

Customer: Centro de Investigaciones Tecnológicas de la Industria de la Carne

Location: Miguelete - Buenos Aires

#### **MULTIPLE EFFECT FALLING FILM EVAPORATOR WITH INDEPENDENT FINISHER EVAPORATOR FOR MEAT BROTH (82%)**

Capacity: 3.000 of feed /hr

Customer: Frigorífico Carcarañá S.A.

Location: Carcarañá - Santa Fe

#### **MULTIPLE EFFECT FALLING FILM EVAPORATOR WITH INDEPENDENT FINISHER EVAPORATOR FOR MEAT BROTH (82%)**

Capacity: 4.000 of feed /hr

Customer: Cía. Elaboradora de Productos Animales S.A.

Location: Pontevedra - Buenos Aires

## **MEAT COOKING PILOT PLANT**

Customer: Instituto Nacional de Tecnología Agropecuaria  
Location: Castelar - Buenos Aires

## **ONE EFFECT FALLING FILM EVAPORATOR FOR BLOOD PLASMA**

Capacity: 2000 kg of evaporated water/hr  
Customer: Industria Química Alimentaria S.A.  
Location: Luis Guillón - Buenos Aires

## **COMPLETE FALLING FILM CONCENTRATION AND SPRAY DRYING PLANT FOR LIQUID EGG AND EGG POWDER**

Customer: Tecnovo S.A.  
Location: Crespo - Entre Ríos

## **LIQUID EGG PASTEURIZER AND SPRAY DRYER FOR WHOLE EGG, EGG WHITE AND YOLK**

Capacity: 200 kg of evaporated water/hr  
Customer: COOPERATIVA LA PRIMERA

## **COMPLETE FALLING FILM CONCENTRATION AND SPRAY DRYING PLANT FOR FISH STICK WATER**

Capacity: 10.000 kg of feed/hr  
Customer: COOMARPES

## **FORCED CIRCULATION FINISHER EVAPORATOR FOR MEAT BROTH**

Customer: SWIFT ARMOUR S.A.

## **VACUUM SYSTEM FOR FINISHER EVAPORATOR FOR MEAT BROTH**

Customer: FRIGORIFICO VIZENTAL

## **MULTIPLE EFFECT FALLING FILM EVAPORATOR FOR MEAT BROTH (82%)**

Capacity: 8.100 kg of evaporated water/hr  
Customer: FRIGORIFICO VIZENTAL

## **CONCENTRADOR DE PELÍCULA DESCENDENTE TRIPLE EFECTO PARA AGUA DE COLA DE PESCADO**

Capacity: 10.000 kg of evaporated water/hr  
Customer: COOMARPES (Cooperativa Marplatense de Pesca) - Argentina)

## **THREE EFFECT FALLING FILM EVAPORATOR FOR FISH STICK WATER**

Capacity: 8.000 kg of evaporated water/hr  
Customer: HARIMAR S. A.

## **TWO EFFECT FALLING FILM EVAPORATOR FOR FOOD GRADE GELATIN**

Capacity: 1.500 kg of evaporated water/hr  
Customer: GELATINAS CORDOBA

## ISOLATED SOY PROTEIN COMPLETE PLANT ENGINEERING

Customer: PRO-SOY S. A.

## DISC DRYER FOR FISHMEAL

Capacity: 2.400 kg of evaporated water/hr

Customer: Coomarpes Ltda.

## DISC DRYER FOR FISHMEAL

Capacity: 2.400 kg of evaporated water/hr

Customer: Agustiner S.A.

## Uruguay

### FULLY AUTOMATED SPRAY DRYING PLANT FOR SOLUBLE FISH PROTEINS

Capacity: 60 kg of evaporated water/hr

Customer: Proteínas Uruguayas S.A.

Location: Montevideo

### REFORM AND CAPACITY INCREASE OF A SPRAY DRYING PLANT, ALLOWING POWDER EGG PRODUCTION

Customer: Proteínas Uruguayas S.A.

Location: Montevideo

## Chile

### MULTIPLE EFFECT FALLING FILM EVAPORATOR AND SPRAY DRYER FOR FISH PROTEINS

Capacity: 400 Kg of dry product/hr

Customer: PROFISH S.A.

Location: Talcahuano - Chile

### TWO EFFECT FALLING FILM EVAPORATOR FOR FISH PROTEINS

Capacity: 6.000 kg of evaporated water/hr

Customer: Profish SA - (Chile)

### SPRAY DRYER FOR CHICKEN BLOOD PLASMA

Capacity: 700 kg of evaporated water/hr

Customer: Agrícola Don Pollo - (Chile)

### AGGLOMERATION AND PNEUMATIC TRANSPORT SYSTEM

Customer: Profish S.A. - (Chile)

## Cuba

**COMPLETE MEAT PROCESSING PLANT FOR BOVINE LIVESTOCK, INCLUYE MEAL, BILE AND BLOOD PROCESSING,**

Capacity: 80 animals/hr

Customer: Construcciones Industriales

Location: Camagüey